

JANUARY 2002

PETTER HOMES AND GARDENS

CH

Photo

Better Homes and Gardens

JANUARY 2002 \$2.99

www.bhg.com

AOL Keyword: BHG

Simple pleasures

Celebrating every day at home

Clutter-busting storage ideas

Pretty windows in no time

SPECIAL FEATURE

Choices and visions
American Family

*****5-DIGIT 94901
 COMP: CAROLYN WALKER DAVIS, AIA S81 P2
 15 CONVENT CT.
 SAN RAFAEL, CA 94901-1333

Space for this cozy nursery (right) was found by expanding a closet with a bumped-up dormer. The change was a great fit for the style of the exterior architecture, enhancing the home's curb appeal.



3 Make Way for Baby

One of life's major changes brought about the attic expansion of the shingled cottage-style house owned by Kristen and Mike House of Mill Valley, California. The couple was having their first child.

The search to incorporate a nursery led the Houses to their rooftop master suite and its space-stretching possibilities. A front dormer window was popped up to turn a former closet into a nursery, and a rear bump-out provided an ample extension to the master bedroom. "We knew the dormer would add more character to the front of the house," says Mike. "It's actually high enough that Kristen can go into the nursery in the middle of the night and not be visible from the street." A small skylight over the crib welcomes more sunlight into the cozy corner, when desired.



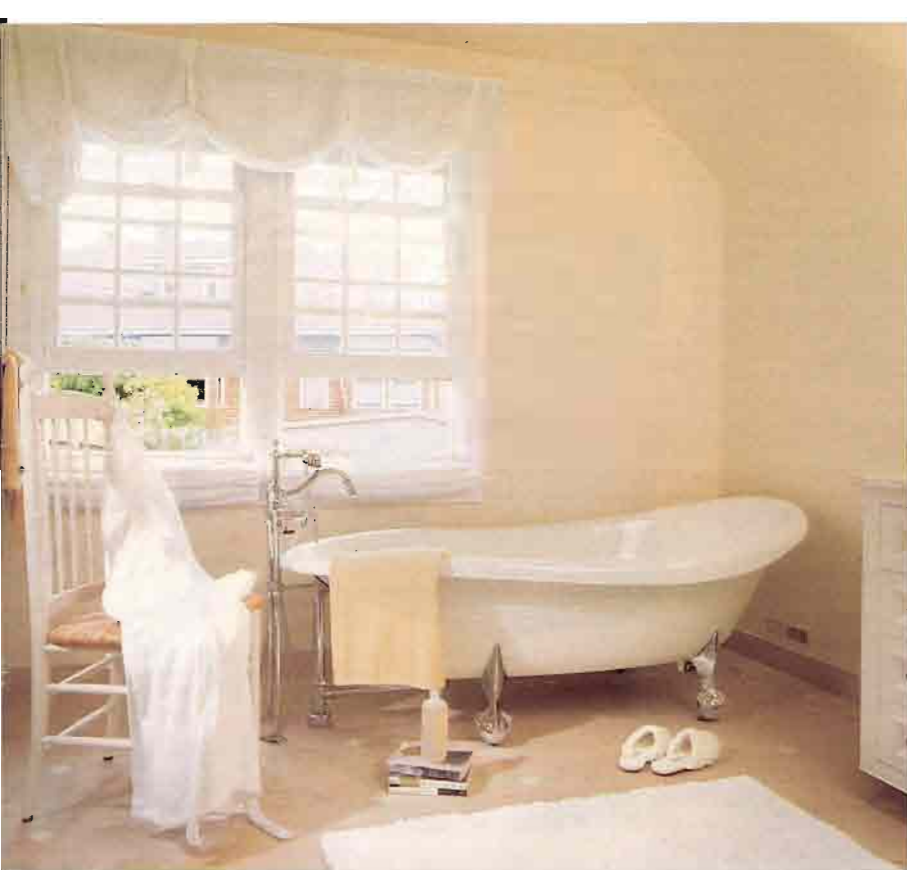
Kristen and her daughter, Madison, (left) read together in the comfy nursery rocker.



PHOTOGRAPHS: JAMIE HADLEY, ARCHITECT; CAROLYN WALKER DAVIS, AIA, MASTER BATH REMODEL; CAROL SHAWN, DESIGNER, AND PETE SENTER, BUILDER. REGIONAL CONTRIBUTOR: CARLA BREER HOWARD



Architect Carolyn Walker Davis raised the floor level of the master bedroom to allow a higher ceiling in the family room downstairs. The architectural change helped to create separate yet open spaces in the master suite, which is a relatively small area.



Along with improving the function of the master bath, additional windows (*left*) improved its form. "It's nice to be able to keep the shades half-open all the time for ventilation," says Mike.

A contemporary interpretation of a Victorian tub seems the ideal fixture for Kristen and Mike's new master bath in this 80-year-old cottage. It replaced a huge, built-in spa tub and surround that took up the entire area of the windowed wall. By selecting a freestanding bathtub and leaving more visible floor, the bathroom now appears more spacious.



The dressing area functions as a transition space between the master bath/walk-in closet, and the top of the stairs/nursery. This room was the former bedroom, and was where the house ended before the bump-out was added. Now it's where dad can get ready early in the morning without disturbing a sleeping mom or baby. A built-in entertainment center is the highlight of the dressing area. It hides a TV so Mike can watch the news, and it makes the most of dead space under a deep sloping roof line. 🏠

Buying information, page 125



The space-saving built-in (*left*) stores a large TV plus personal treasures. Kristen cherishes the overhead linen storage (*above*). Below, banks of drawers work for toiletries, leaving cabinet space for bulky items.